

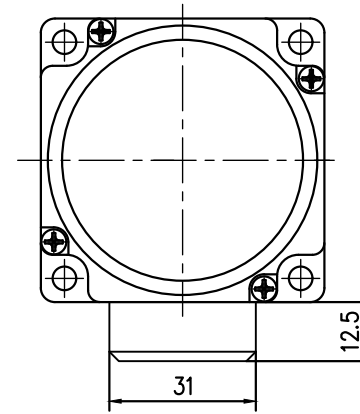
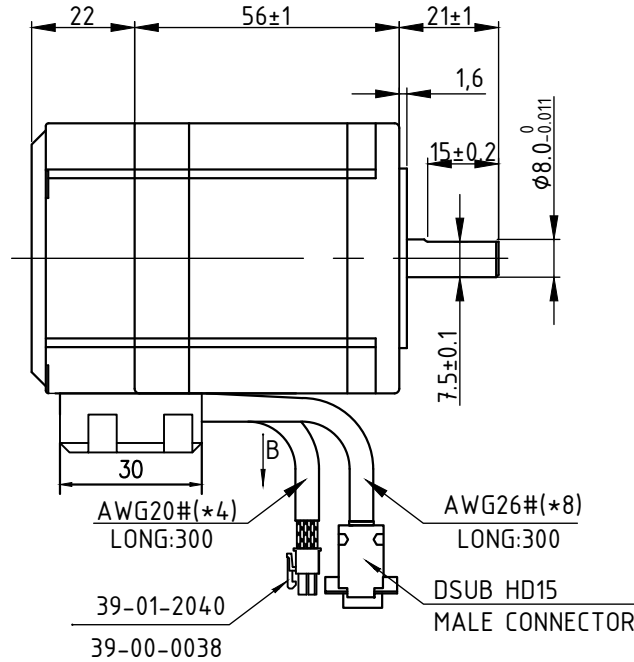
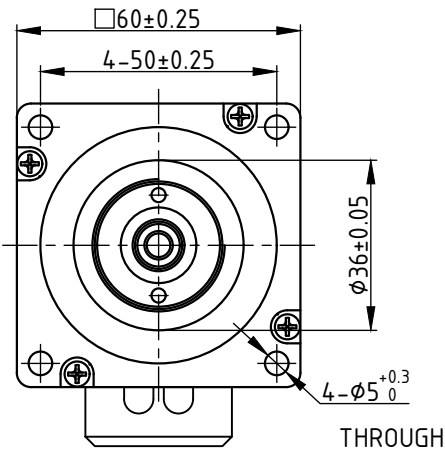
Dimensions Unit=mm

RoHS COMPLIANT



T3-24-2-10K

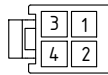
REV:B



Encode Control (2500CPR)

| | | |
|---|------------------|-------|
| 1 | Black | EGED |
| 2 | Red | +5VCC |
| 3 | Bule | EA+ |
| 4 | Blue/ White | EA- |
| 5 | Orange | EB+ |
| 6 | Orange/ White | EB- |
| 7 | Green/ White | EZ- |
| 8 | Green | EZ+ |

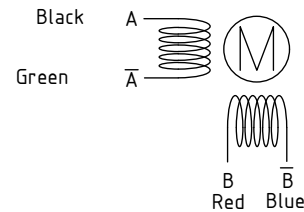
| |
|----------------|
| 1 - Black (A) |
| 2 - Red (B) |
| 3 - Green (/A) |
| 4 - Blue (/B) |



Motor Specification

| | |
|-------------------------------|-------------------------|
| Number Of Phase | 2 |
| Basic Step Angle | 3° |
| Positional Accuracy(no-load) | ±0.09° Max |
| Rated Current(Phase) | 4.0A |
| Resistance(Phase)@20°C | 0.44Ω±10% |
| Inductance(Phase)@1KHz | 1.0mH±20% |
| Holding Torque | 1.0N · m |
| Rotor Inertia | ≈340g · cm ² |
| Mass | ≈0.8Kg |
| Radial Play(Max) | 0.025mm(Load 450g) |
| Axial Play(Max) | 0.075mm(Load 920g) |
| Duty | Continuous |
| Dielectric Strength | 500V A.C |
| Insulation Resistance | 100MΩ Min |
| Insulation Class(UL) | B |
| Temperature Rise | 80K Max |
| Life(Hours) | 5000/Min |
| Operation Ambient Temperature | 0°C~+50°C |
| Operation Ambient Humidity | 20%RH~90%RH |
| SStorage Ambient Temperature | -20°C~+70°C |
| SStorage Ambient Humidity | 15%RH~95%RH |

Wiring Diagram



Phase Sequence(2 Phase Exciting)

| | | | | | | |
|-----|------|---|---|----|----|----|
| CCW | Step | A | B | Ā | B̄ | CW |
| | 1 | + | + | - | - | |
| | 2 | - | + | + | - | |
| | 3 | - | - | + | + | |
| | 4 | + | - | - | + | |
| 5 | + | + | - | - | | |

Label Discription



| | | | | | | |
|---|----------|-----------|----------|------|-----------|-------|
| F | Approved | | | | Material | |
| | Checked | | | | Finish | |
| | Designed | FJ | 20210304 | | Tolerance | |
| | Designed | Date | Drawn | JYY | Scale | 1:2 |
| | Edition | Revisions | Designed | Date | Drawn | Sheet |
| | | | | | | 1/1 |